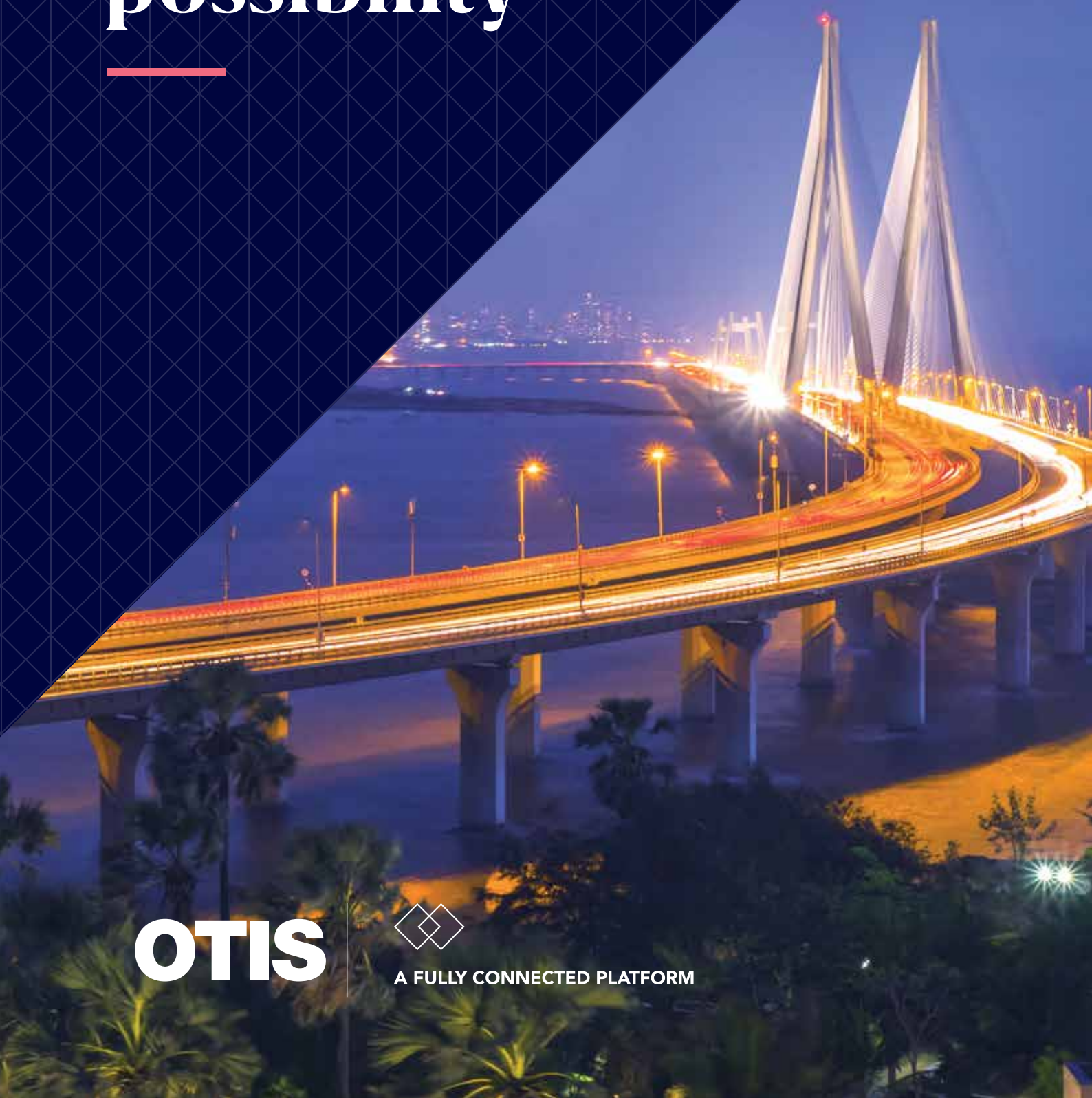


# Gen3™ elevator

## A platform for possibility

---



**OTIS**



A FULLY CONNECTED PLATFORM

# A platform for possibility

---

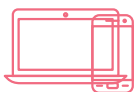
**Every aspect of modern life is changing.** The ways we connect. The experiences we have. The places we live, work and play. The elevator needs to advance as well to harness the numerous possibilities of a more connected future - and Otis is taking you there.

The new Gen3™ elevator brings the promise of a connected platform into today. With the proven design of our best-selling Gen2® elevator and the built-in connectivity of our Otis ONE™ IoT digital platform, the Gen3 elevator is advancing in new ways.



## **EXPERIENCES. ADVANCED.**

The latest connected technologies put passengers in control and ensure a smooth, seamless ride, time after time.



## **SERVICES. ADVANCED.**

More personalized services through our Otis ONE IoT digital platform to keep you ahead of potential issues.



## **DESIGN. ADVANCED.**

Sophisticated aesthetics and a range of options fit most buildings and diverse style choices.



## **HEALTH & SAFETY. ADVANCED.**

We prioritize safety and every passenger's health and well-being.



## **CUSTOMER SUPPORT. ADVANCED.**

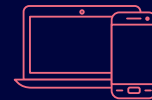
From resources and tools to guidance and expertise, Otis makes planning and managing smarter and simpler.



### PEOPLE FIRST

The Gen3 elevator reflects human-centric innovation and design, offering safe and comfortable rides, promoting healthier environments and delivering confidence and convenience.

---



### READY FOR WHAT'S NEXT

The Otis ONE IoT digital platform design allows the Gen3 elevator to add many new future technologies. By enabling the flexible, seamless addition of technologies without a complete system upgrade, you can anticipate the challenges and opportunities of tomorrow.

---



### EFFICIENCY ALWAYS

The Gen3 elevator is designed with features that are up to 50% more energy efficient than conventional elevators, achieving substantial energy savings and significant reductions in CO2 emissions.

# Solutions for your world.

---

Our Gen3 elevators blend convenience, style and performance to deliver a new passenger experience that adds value to any residential, commercial, hospitality, medical or industrial building.

## THE GEN3 FAMILY OF ELEVATORS

- +** Gen3 Stream
  - +** Gen3 Life
  - +** Gen3 Nova
  - +** Gen3 Core
  - +** Gen3 Prime
-



# Gen3™ elevator (available in MRL and MR)

The Gen3 elevator combines elegant design and advanced engineering. Its style, comfort and speed ensure your tenants and visitors experience your building at its best.

Travel height maximum	96m			
Maximum stops	32			
Range of Speed (mps)	0.7	1	1.5	1.75
Capacity	340kg - 1768kg			

**Compact Gearless Machine:** Combined with ReGen drive, reduces energy consumption up to 75%.\*\*



**Otis ONE™ IoT Digital Platform:** Provides Gen3™ elevator's connected intelligence with emergency audio to OTISLINE®



**Smooth Coated Steel Belts:** Reduce noise from metal-to-metal contact of steel ropes to deliver a smooth, quiet ride.



**Otis Cab Air Purifier:** Significantly reduces airborne bacteria and viruses.



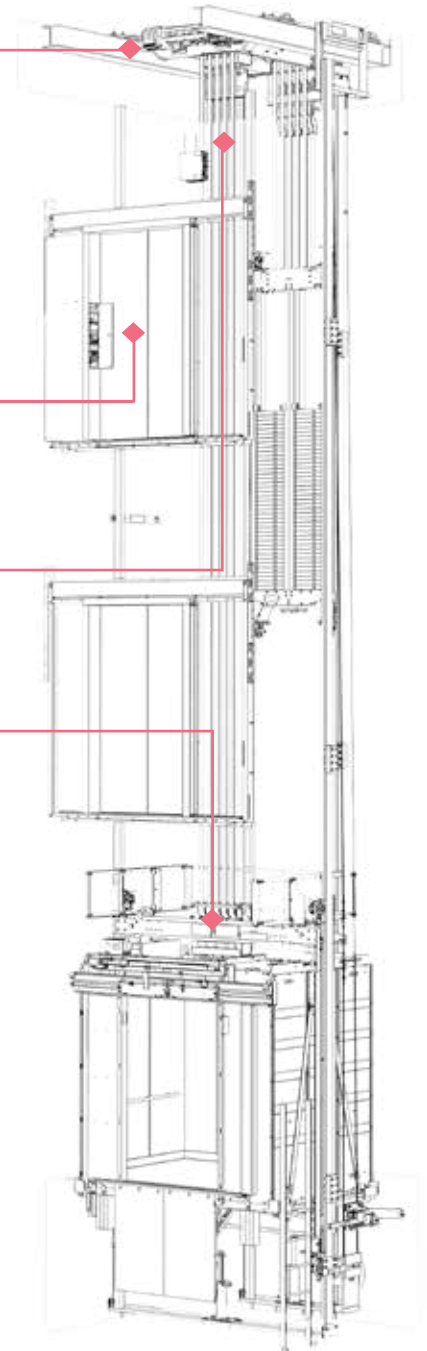
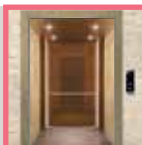
**Otis eCall™ app:** Summon your elevator remotely for a touchless experience.



**Compass® 360 destination management:** Cuts travel time up to half compared to traditional systems.



**Wide Range of Aesthetics like Ambiance:** Available in Natural and Modern editions



\*\*Compared to conventional systems without regenerative technology.

# Reliable, as expected

Some of the world's most distinguished buildings trust in Otis technology. Manufactured exclusively at our ISO-certified factories, it is the result of our most advanced thinking, global experience and deep engineering expertise. All so you can be sure of getting exceptional Otis performance day after day.



## **PULSE™**

The Pulse System continuously monitors the elevator's coated steel belts to safeguard their integrity, ensuring safe, efficient operation and reduced inspection downtime.



## **AUTOMATIC RESCUE OPERATION**

Battery-powered systems deliver passengers safely to the nearest floor during a power failure.



## **GOVERNOR TRIPPING TEST**

# 25%

MORE

\*Exceed application code



## **BUFFER STRIKE TESTS**

# 16x

MORE

\*Exceed application code



## **SAFETY GEAR TESTS**

# 6x



## 'MADE IN OTIS'

---



At Otis, quality, safety and reliability are the hallmarks of exceptional design. Manufactured exclusively at our ISO-certified Bengaluru factory to Otis' exacting standards, the Gen3 takes safety and reliability to new heights. It also underscores our commitment to the 'Make in India' initiative.



# One platform. So many possibilities.

---

With the Otis ONE IoT digital platform fully integrated, the Gen3 elevator is more than a way to move people – it's a platform for possibility. It's about having an intuitive solution that adapts to the current world of technology and is ready for the world to come.

The core of the Gen3 elevator, the Otis ONE IoT digital platform solution is designed to evolve. Powered by the Internet of Things (IoT), machine learning and cloud connectivity, with a subscription, future updates are only a download away.





# Otis ONE ecosystem

---

The Otis ONE IoT digital platform is part of a powerful, expanding ecosystem of technologies and capabilities that integrate APIs for service, operation, elevator calling and more. These integrations enable features like robot, voice and gesture interaction with expansion potential.



## **SERVICE DATA APPLICATION PROGRAMMING INTERFACE (APIs)**

Integrate data into a building management system (BMS) to stay up-to-date with your elevator's availability, maintenance, repair and call back data.



## **REAL-TIME OPERATIONS DATA APIs**

Building owners and facility managers can access real-time data to receive elevator status updates, performance insights and alarm information.



## **ELEVATOR CALLING APIs**

Easily call and place elevator destination requests. And, as many businesses turn to service robots to improve the customer experience and productivity for their employees, APIs can connect service robots without hard-wired connections.

# Otis ONE™

---

## **SERVICE THAT'S A STEP AHEAD**

With Otis ONE IoT digital platform software-enabled service, you'll experience greater system transparency and predictability, enabling you to harness the power of advanced monitoring, big-data analytics and predictive maintenance to identify and address potential issues before they happen.

---

### **PROACTIVE COMMUNICATION**

#### **Real-time notifications**

Ongoing status updates and 24/7 proactive monitoring ensures your equipment stays up and running - or we'll notify you as soon as an issue is detected.

#### **Informed repairs**

Service requests are closed sooner with automatic alerts that provide mechanics accurate fault information and the parts needed before they arrive at your building.

### **REASSURED PASSENGERS**

#### **Voice call for emergencies**

Connects passengers with OTISLINE via voice call to provide greater peace of mind during an entrapment.

### **PREDICTIVE INSIGHTS**

To ensure your business continuity, mechanic visits are planned based on predictive maintenance algorithms so that problems can be fixed before they cause a shutdown.

---

### **AN ELEVATOR WITH A HEARTBEAT**

The Gen3 elevator monitors equipment health and performance in real time, 24/7. The information is collected and analyzed against more than 30 years of Otis foundational data to uncover new insights that help better predict and solve issues, and avoid unexpected downtime. That way, you don't have to worry about an unexpected shutdown.

---

### **REMOTE INTERVENTION**

#### **Where allowed**

#### **Remote reset**

In case of minor issues, where codes allow, we can reset your equipment remotely within minutes.

#### **Remote assistance**

In case of passengers trapped in the car, we can release them promptly after safety conditions are checked.

#### **Customized lift operations**

Our remote experts can customize to match your needs: modify door opening speed, manage floor access and personalize voice announcements.

## **Faster, more informed repairs**

We're empowering mechanics with automatic alerts, more data and new digital capabilities.

---

# Transparent information

## OTIS CUSTOMER PORTAL

- Manage in real time every unit within your portfolio in a single view
- Visualize the benefits of predictive insights
- Leverage elevator health reports to prepare for your future investments
- Place online service requests

## OTIS DEVELOPER PORTAL

- Leverage the Otis open API to integrate the data you need into your own system
- Easy set up with clear software documentation and sample code



# Experience advances with compass 360

---

When we set out to create a new experience for our elevator, we designed it with people at the center of everything. The result? A smart, connected, sophisticated system that advances the passenger experience in as many ways as possible – and raises expectations for what an elevator can be.

Compass® 360 elevator dispatch management with SmartGrouping™ technology organizes travel between floors to maximize efficiency, grouping passengers into elevators to quickly reach floors in similar zones.



## **STYLISH**

Sophisticated design is at the heart of Compass 360. With user interface screens in a range of sizes, shapes and styles, the look and feel can reflect your building aesthetics or brand ID.



## **SMART**

You can dedicate access to particular elevators and floors, as well as deploying a VIP coded entry mode. Compass 360 also connects with your security and access systems.



## **SIMPLE**

Compass 360 acts as a virtual concierge, smoothing people's journeys. Passengers are directed to the most appropriate elevator by the easy-to-use, intuitive wall-mounted screens.







PLEASE TOUCH ICON

- MAIN LEVEL
- TRANSPORTATION
- PARKING
- POOL
- FITNESS CENTER
- SPA
- DINING
- LOUNGE
- SHOPPING



PLEASE TOUCH ICON

- MAIN LEVEL
- TRANSPORTATION
- PARKING
- POOL
- FITNESS CENTER
- SPA
- DINING
- LOUNGE
- SHOPPING



THANK YOU  
FOLLOW DIRECTIONS BELOW

ELEVATOR



FLOOR



THANK YOU  
FOLLOW DIRECTIONS BELOW

ELEVATOR



FLOOR



THANK YOU  
FOLLOW DIRECTIONS BELOW

ELEVATOR





# Design. Advanced.

OTIS in collaboration with design curators introduces a new aesthetic for elevators – Ambiance.

A unique play of materials, form, textures and patterns allows the Ambiance aesthetics to breathe life to your elevator space. The distinctive lighting element illuminates the accented materials in a contemporary dance of shadows and light, classic fixtures embody design for longevity and hard edges relent to fluid curves around the cornices.

We call it- Art in Motion







2  
OTIS





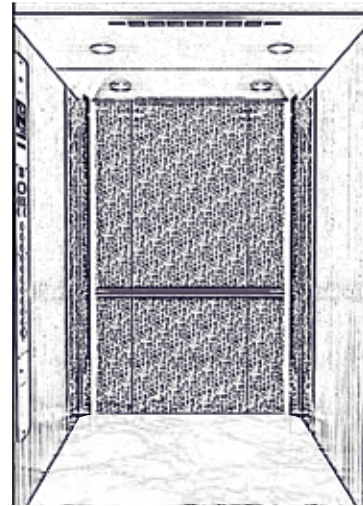
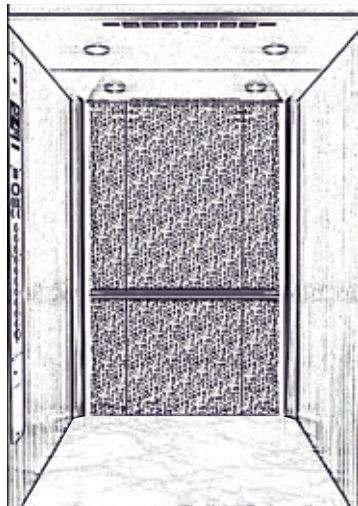
# Ambiance cab design.

## Art in motion.

Otis has a globally integrated design team, which has been screened by experts to provide users carefully selected Ambiance cab designs. You can choose your own style to create a space for your lifestyle.

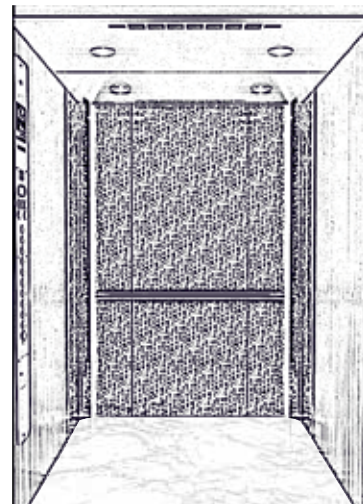
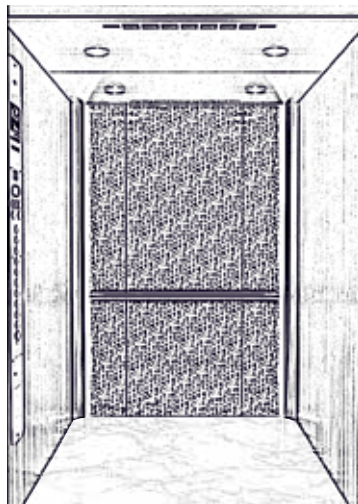
### + Natural

Natural Ambiance designs and materials are warm and bright using printed designer steel. A sublime choice of materials blended to evoke serenity.



### + Modern

Modern Ambiance designs and materials are contemporary and vibrant using a combination of printed designer steel and shades of Stainless Steel Hairline.



# Aura

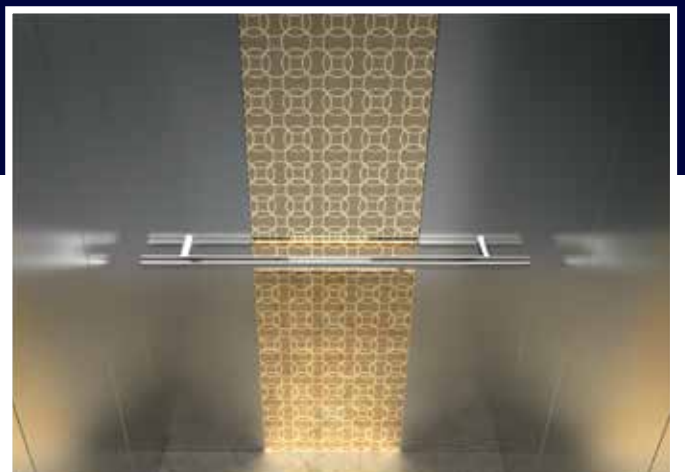
Rose Gold



Champagne  
Gold



Ceiling



Back Panel

# Atmos

Tame Teal  
with skyblue



Green with  
lime green



Ceiling



Back Panel





# Customer support. Advanced.

---

We offer support at every stage of your process and are dedicated to helping you explore and implement solutions for today and enhancements for the future.

---



# Personalize your project

---

## EXPERIENCE A FULL SUITE OF PERSONALIZED DESIGN TOOLS AND RESOURCES

Whether you're an architect looking to configure models and make structural decisions, a developer navigating complex planning requirements or anyone in between, it's easier to explore new possibilities and make informed decisions based on the unique needs of your project.

### YOUR PROJECT STAGE

### YOUR OTIS TOOL

Design



#### OTIS CREATE

Simplify elevator system planning with recommended configurations, customized performance details and more – all in a few clicks.

#### OTIS WEB PLAN LITE

Explore our intuitive tool for planning and designing your own vertical transport solutions. Try out the Web plan Lite for various combinations and find the best fit for your project.

Service



#### CUSTOMER PORTAL

Get instant updates on the health, maintenance and account status of your elevator. Manage all your units in one place.

#### DEVELOPER PORTAL (OTIS APIs)

Connect your Otis data seamlessly to your existing building management applications

## A CLOSE PARTNERSHIP, EVEN BEYOND CONSTRUCTION

We understand that every project is truly unique. Our teams can work with you at every step to ensure a smooth, seamless installation in buildings of all types and sizes. And it's not just new builds. In challenging modernization projects, we can help customers implement a Gen3 solution that enhances the building experience and opens the door to future digital technologies. Our local teams are easy to work with and committed to delivering on your needs – and our promises. This includes customer-centric support from a financial and planning perspective.

# Modular Designs

---

## Premium powder coated-dual tone



Aqua



Arctic



Brickstone\*\*



\*Colours and finishes shown are indicative. Please allow for minor variations.  
\*\* Textured finish

## Powder coated-single tone



Ivory\*\*



Pebble\*\*



Pearl



\*Colours and finishes shown are indicative. Please allow for minor variations.  
\*\* Textured finish



# Stainless steel



Slate



Mirror



\*Colours and finishes shown are indicative. Please allow for minor variations.  
\*\* Textured finish

# Aura- Atmos Aesthetic Range

Intermediate

Duplex HOP -  
intermediate



Hall Lantern  
(Vertical)

Fireman  
Switch

Emergency  
Alarm Switch



## CAR OPERATING PANEL

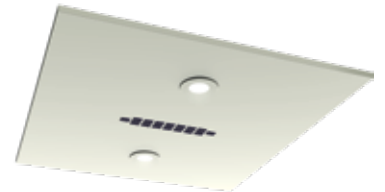


Car Position  
Indicator



## Prime Range of Fixtures

False Ceiling



Hand Railing



HOP



\*Handrail is optional

## CEILING

Available in powder painted, stainless steel hairline and stainless steel mirror finishes.



CD-41 (Base)



CD-42 (Option)

Available in stainless steel hairline and stainless steel mirror finishes



CD-35 (Option)

## HANDRAILS



## HALL LANTERNS



Vertical



Horizontal

## HALL OPERATING PANELS

Two different display options. Pan type monochrome HOP as base



Pan



Flat

Monochrome Colour LCD

Flat duplex with colour LCD



## CAR OPERATING PANELS

Two different display options.



Push button with braille

## CAR POSITION INDICATOR



Monochrome LCD



Monochrome LCD Display (Optional)



LCD Display (Color LCD - Option)

All fixtures are available in stainless steel hairline, stainless steel mirror and stainless steel gold. However, pan hall fixtures are not available in stainless steel gold.



Hairline



Mirror



Gold



## Standard features

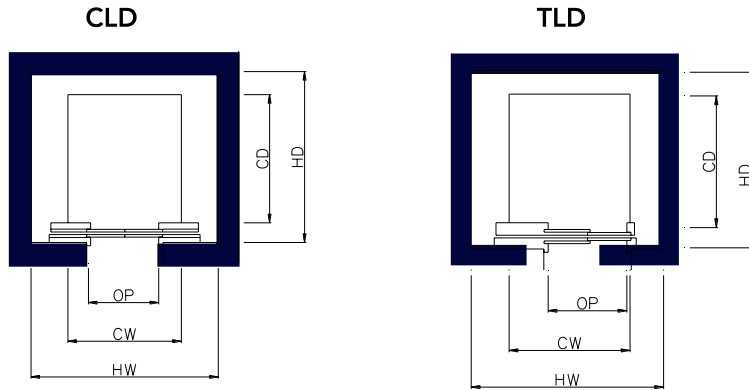
Parameter	Feature details	Parameter	Feature details
ACCB	Audible car call button for 1.75	ECU	Emergency car light
ADO	Advance door opening (1.5 mps > 45m rise, 1.75 mps-all rises)	EFS/GSW	Emergency fireman service/grounding switch
ALARB	Alarm button and acoustic alarm device	ERO	Electrical recall operation
ANS-C	Anti-nuisance car call	ESB	Emergency stop switch
ARD-1	Automatic return destination (Home landing)	FAN	Forced car ventilation with auto fan cut-off
ARO	Automatic rescue operation (Battery Operated)	FCO	Full collective operation
BID	Belt inspection device for coated steel belt	HAD	Hoistway access detection
BSM	Basement service	HDI	Hall direction indicator (In hall button box)
CDD	Car door detector (Infra-red curtain)	HPI	Monochrome LCD hall position indicator (All floors)
CHCS	Cut-off hall call switch	HTTL	Hall tell tale light
CPI	Monochrome LCD position indicator in car	ISC	Independent service (Start with constant pressure on car button)
CTTL	Car tell tale lights (Call registration illumination)	LED	Car light ( Automatic on/off)
DCB	Door close button	LNS-C	Load non-stop device (In car)
DOB	Door open button	LW	Load weighting device
DTP	Door time protection	MRO	Manual rescue operation
DXT	Extra door time (Lobby and parking)	NGD	Door nudging
DZI	Door zone indicator	RELEV	Relevelling feature (1.5 mps > 45m rise, 1.75 mps-all rises)

## Optional features

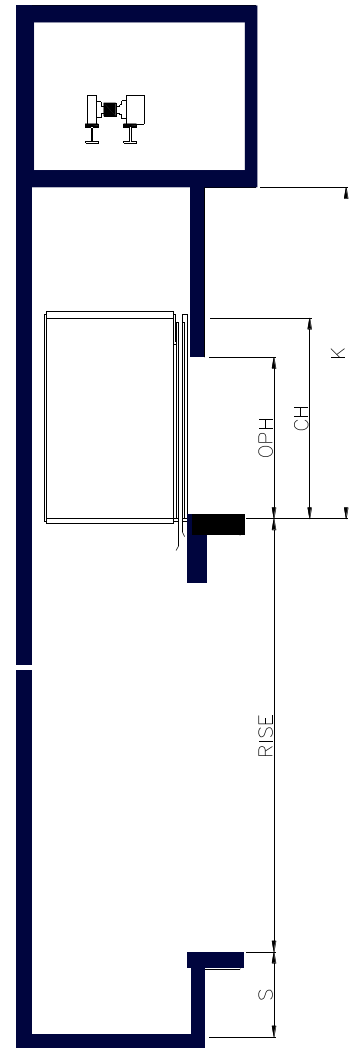
Parameter	Feature details	Parameter	Feature details
ACCB	Audible car call button for 1.5	GC4	Emergency power operation
ATT	Attendant operation	GC4	Car group operation
BIO	Provision for Biometric access	HL	Hall lantern
CCM	Chime in car	ICU	Intercommunication car - lobby - machine room
CCTV	Closed circuit TV cable	PKS	Parking key switch
CPI	Color LCD display position indicator in car	RGC	Rear glass car
CRO	Provision for car reader access	SAO	Security access
DCO	Down collective operation	SD	Smooth deceleration
EFO	Emergency fireman operation	SSM	Speech synthesis module

# Gen3 MR HOISTWAY SIZES

PRODUCT	DUTY LOAD (kg)	SPEED (m/s)	K MINIMUM (mm)	S MINIMUM (mm)	MAX NUMBER OF STOPS	MAXIMUM RISE (m)	CH (mm)	OPH (mm)
CORE	340 & 408	0.7	4000	1350	8	25	2200	2000
NOVA	340, 408, 544, 680, 884 & 1020	1	4000	1350	21	60	2200	2000
LIFE	544, 680, 884 & 1020	1.5	4500	1600	21	63	2200	2000
	1088	1.75			32	96		
		1.5 & 1.75			21	63		
STREAM	1088, 1156, 1360, 1632 & 1768	1	4100	1350	16	45	2400	2100
		1.75	4400	1600	32	96		



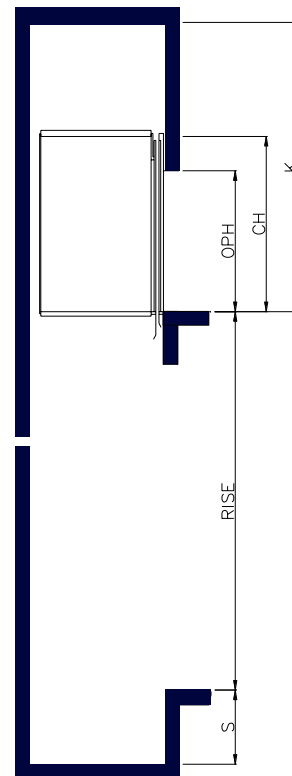
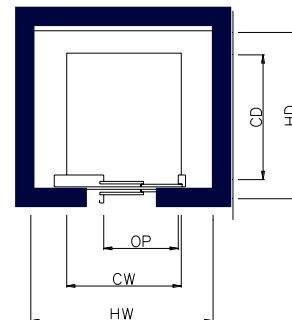
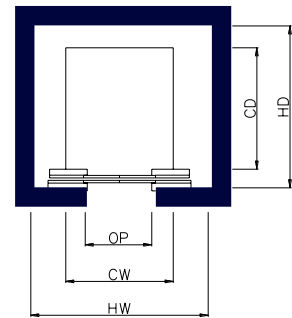
PRODUCT	DUTY LOAD (kg)	SPEED (m/s)	CW (mm)	CD (mm)	OPENING TYPE (mm)	OPENING WIDTH	HW (mm)	HD (mm)
CORE	340	0.7	1000	950	CLD	700	1600	1400
	408		1000	1050	TLD	700	1500	
NOVA	340	1	1000	950	CLD	700	1600	1400
	408		1000	1050	TLD	700	1500	
	544		1100	1300	CLD	800	1850	
	680		1300	1350	CLD	800	1900	
	884		1600	1350	CLD	900	2200	
	1020		1100	2000	CLD	800	1850	
LIFE	544	1.5 & 1.75	1100	1300	CLD	800	1850	1650
	680		1300	1350	CLD	800	2000	1700
	884		1100	2000	CLD	800	1850	2350
	1020		1600	1350	CLD	900	2250	1700
			1000	2400	TLD	900	1750	2750
	1088		1200	2000	CLD	800	1850	2350
STREAM	1088	1 & 1.75	1600	1500	CLD	900	2250	1850
	1156		1800	1450	CLD	1000	2550	1850
	1360		1800	1500	CLD	1000	2550	1900
			1200	2200	TLD	1000	1950	2650
	1632		2000	1550	CLD	1100	2750	1950
			1800	1700	CLD	1000	2550	2100
	1768		1300	2400	TLD	1100	2100	2850
			2000	1800	CLD	1100	2750	2200
	1500	2400	TLD	1200	2250	2850		
	1600	2400	TLD	1200	2350	2850		



# Gen3 MRL HOISTWAY SIZES

PRODUCT	DUTY LOAD (kg)	SPEED (m/s)	K MINIMUM (mm)	S MINIMUM (mm)	MAX NUMBER OF STOPS	MAXIMUM RISE (m)	CH (mm)	OPH (mm)
PRIME	340 & 408	0.7	3700	1100	6	20	2100	2000
CORE	340 & 408	0.7	4000	1350	8	25	2200	2000
	544	0.7	4000	1350	6	15		
NOVA	340, 408, 544, 680 & 884	1	4000	1350	21	60	2200	2200
	612				16	45		
	1020 & 1088				11	30		
LIFE	544, 680, 884 & 1020	1.5	4500	1600	21	63	2200	2000
		1.75			32	96		
	1088	1.5 & 1.75			21	63		
STREAM	1088, 1156, 1360, 1632 & 1768	1	4100	1350	16	45	2400	210
		1.75	4400	1600	32	96		

PRODUCT	DUTY LOAD (kg)	SPEED (m/s)	CW (mm)	CD (mm)	OPENING TYPE (mm)	OPENING WIDTH	HW (mm)	HD (mm)		
PRIME	340	0.7	1000	950	CLD	700	1600	1325		
			950	1000	TLD	700	1500	1350		
	408		1000	1100	CLD	700	1600	1450		
			950	1150	TLD	700	1500	1500		
CORE	340	0.7	1000	950	TLD	700/800	1600	1300		
			950	1000	TLD	700	1550	1400		
						800	1600			
					CLD	700	1600			
	408		1000	1100	TLD	700	1600	1500		
					TLD	800	1600			
					CLD	800	1850			
					TLD	800	1700	1650		
NOVA	340	1	950	1000	TLD	700	1550	1400		
					CLD	700	1600	1400		
			950	1000	TLD	800	1600	1400		
					TLD	700	1600	1325		
	408		1000	950	TLD	800	1600	1325		
					TLD	800	1600	1325		
					TLD	800	1600	1500		
					CLD	700	1600	1500		
	544		1250	1150	CLD	800	1850	1550		
					CLD	800	1850	1650		
			1100	1300	TLD	800	1700	1650		
					TLD	800	1700	1650		
			612	1200	1300	CLD	800	1850	1650	
						CLD	800	1850	1650	
				680	1100	1600	TLD	800	1750	1950
							TLD	800	1750	1950
	884		1600	1350	CLD	900	2300	1700		
					CLD	800	1850	2350		
			1100	2000	TLD	800/900	1750	2350		
					TLD	800/900	1750	2350		
1020		1000	2400	TLD	900	1700	2750			
				CLD	800	1850	2750			
		1000	2400	CLD	900	2000	2750			
				CLD	900	2300	1875			
1088	1600	1600	CLD	900	2250	1950				
			CLD	1000	2300	1950				
	1300	2000	CLD	900	2050	2350				
			CLD	1000	2200	2350				
	1300	2000	TLD	1000	1950	2400				
			TLD	1000	1950	2400				
	LIFE	544	1100	1300	CLD	800	1850	1650		
		680	1300	1350	CLD	800	2000	1700		
				CLD	800	1850	2350			
884		1100	2000	CLD	800	1850	2350			
				CLD	900	2250	1700			
1020		1000	2400	TLD	900	1750	2750			
				CLD	800	1850	2350			
		1200	2000	CLD	800	1850	2350			
			CLD	900	2250	1850				
1088	1600	1500	CLD	900	2250	1850				
			CLD	1000	2350	1875				
	1600	1600	CLD	900	2250	1950				
			CLD	900	2050	2350				
STREAM	1088	1800	1450	CLD	1000	2550	1850			
	1156	1800	1500	CLD	1000	2550	1900			
				TLD	1000	1950	2650			
	1360	2000	1550	CLD	1100	2750	1950			
				CLD	1100	2750	1950			
		1800	1700	CLD	1000	2550	2100			
				TLD	1100	2100	2850			
	1632	2000	1800	CLD	1100	2750	2200			
			TLD	1200	2250	2850				
1768	1600	2400	TLD	1200	2350	2850				



Otis gives people freedom to connect and thrive in a taller, faster, smarter world. The global leader in the manufacture, installation and servicing of elevators and escalators, we move 2 billion people a day and maintain more than 2.1 million customer units worldwide – the industry's largest Service portfolio. You'll find us in the world's most iconic structures, as well as residential and commercial buildings, transportation hubs and everywhere people are on the move. Headquartered in Connecticut, USA, Otis is 70,000 people strong, including 41,000 field professionals, all committed to meeting the diverse needs of our customers and passengers in more than 200 countries and territories. To learn more, visit [www.otis.com](http://www.otis.com) and follow us on LinkedIn, Instagram, Facebook and Twitter @OtisElevatorCo.